

Name \_\_\_\_\_

Standard A1.2.1.1.1

1.

Tim's scores the first 5 times he played a video game are listed below.

4,526   4,599   4,672   4,745   4,818

Tim's scores follow a pattern. Which expression can be used to determine his score after he played the video game  $n$  times?

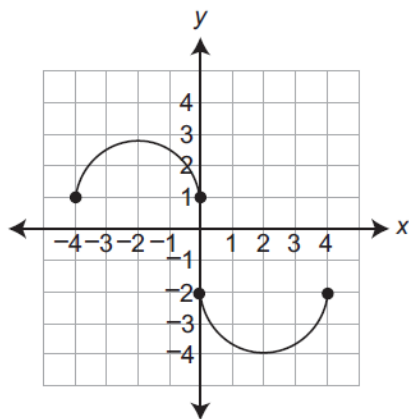
- A.  $73n + 4,453$
- B.  $73(n + 4,453)$
- C.  $4,453n + 73$
- D.  $4,526n$

2.

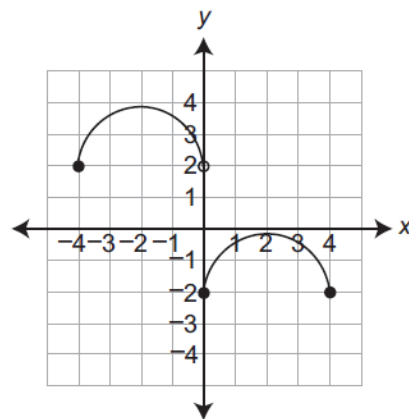
Standard A1.2.1.1.2

Which graph shows  $y$  as a function of  $x$ ?

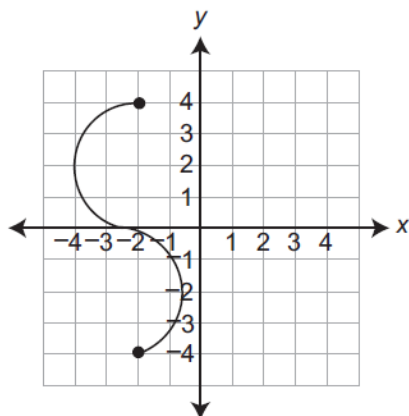
A.



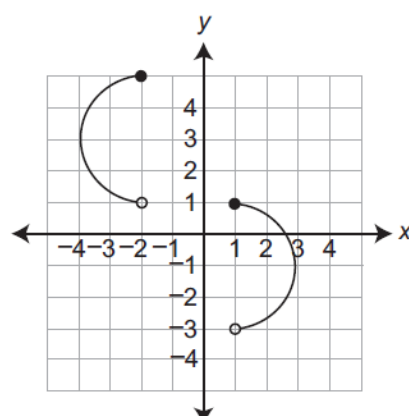
B.



C.

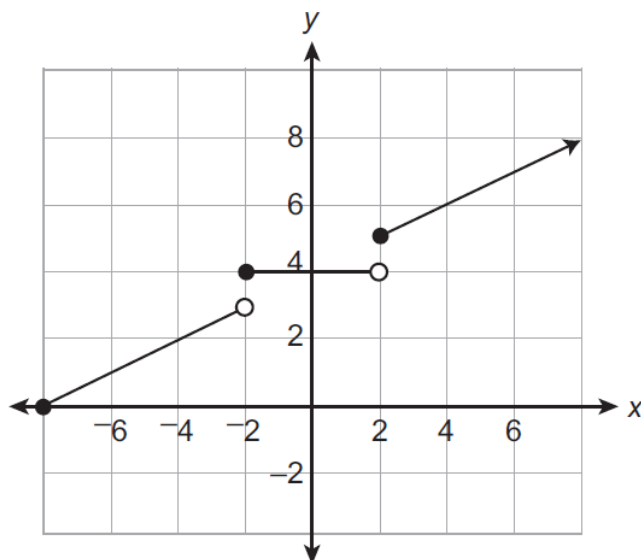


D.



3. Standard A1.2.1.1.3

The graph of a function is shown below.



Which value is **not** in the range of the function?

- A. 0
- B. 3
- C. 4
- D. 5

4.

Standard A1.2.1.2.1

A pizza restaurant charges for each pizza and adds a delivery fee. The cost ( $c$ ), in dollars, to have any number of pizzas ( $p$ ) delivered to a home is described by the function  $c = 8p + 3$ . Which statement is true?

- A. The cost of 8 pizzas is \$11.
- B. The cost of 3 pizzas is \$14.
- C. Each pizza costs \$8, and the delivery fee is \$3.
- D. Each pizza costs \$3, and the delivery fee is \$8.

5.

Standard A1.2.1.2.2

The table below shows values of  $y$  as a function of  $x$ .

$x$	$y$
2	10
6	25
14	55
26	100
34	130

Which linear equation describes the relationship between  $x$  and  $y$ ?

- A.  $y = 2.5x + 5$
- B.  $y = 3.75x + 2.5$
- C.  $y = 4x + 1$
- D.  $y = 5x$